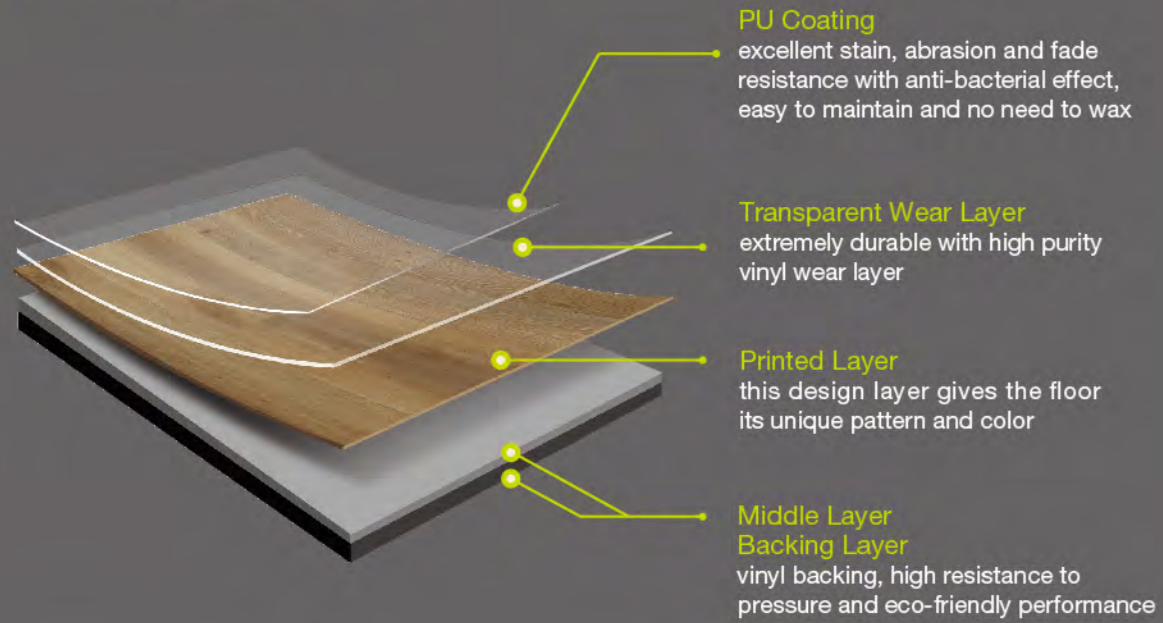


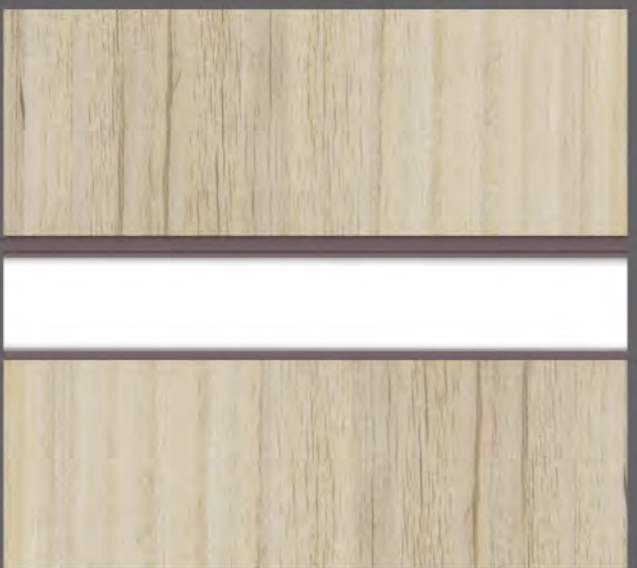
PRODUCT STRUCTURE



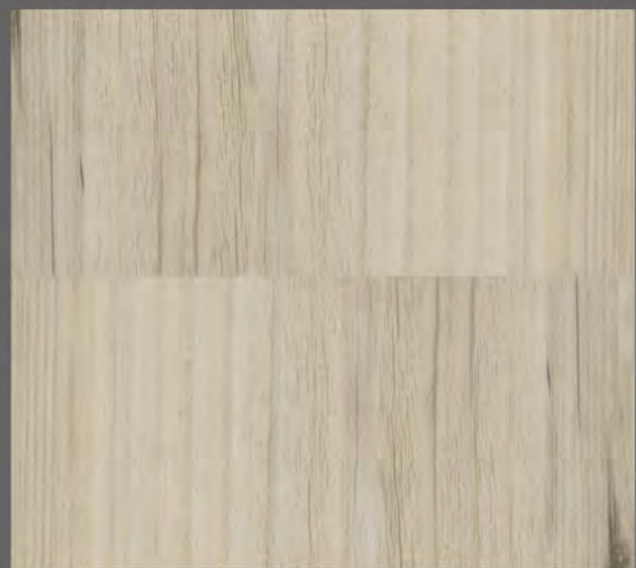
The thickness of NOVAFLIC wear layer is 0.3mm without microbevel (side view)



The thickness of NOVAFLIC wear layer is 0.55mm with microbevel (side view)



BEFORE installation



AFTER installation



STONE

**NOVALIS**  
INNOVATIVE FLOORING



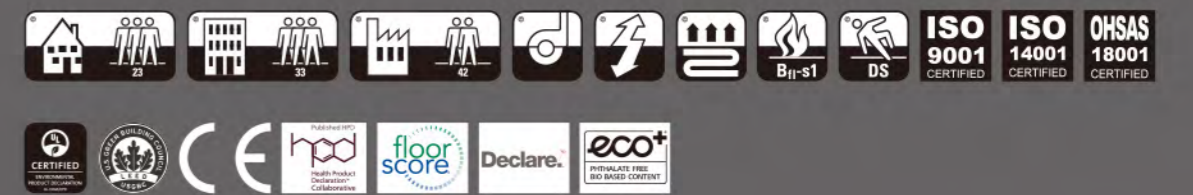
Partner



[www.novalis-intl.com](http://www.novalis-intl.com)



CHARACTERISTICS	TEST METHOD	STONE	NOVAFLIC
Luxury Vinyl Tile	EN 649	Heterogeneous PVC	Heterogeneous PVC
Lacquering PU		Particle PU Lacquer	Particle PU Lacquer
Weight	EN 430	ca.4315 g/m <sup>2</sup>	ca.8716 g/m <sup>2</sup>
Thickness	EN 428	2.5 mm	5.0 mm
Wear layer	EN 429	0.55 mm	0.55 mm
Classification	EN 685	23, 33, 42	23, 33, 42
Fire Classification	EN 13501	Bfl-S1	Bfl-S1
Slip Resistance	DIN 51130 EN 13893	R9 DS	R9 DS
Weargroup	EN 649	T	T
Residual Indentation	EN 433	<0.1 mm	<0.1 mm
Thermal Conductivity	DIN 52612	0.02 m <sup>2</sup> k/w	0.02 m <sup>2</sup> k/w
Electrical Conductivity	EN 1081	app 10 <sup>11</sup> Ohm	app 10 <sup>11</sup> Ohm
Castor Chair	EN 425	Yes, Type W	Yes, Type W
Floor Heating		Yes, max.27°	Yes, max.27°
Colourfastness	ISO 105-B02	m>6 Grade	m>6 Grade



**NOVALIS**  
INNOVATIVE FLOORING



## STONE

- Long-accumulated geocentric energy
- Brightly colored lava expelled from volcanic activities
- Rough surfaces created after cooling down
- Vivid layers formed and accumulated
- Astounding and mind-boggling – time unveils natural craftsmanship

### Stained Concrete



Fossil SC011



Iron SC031



Bianco PO011



Rosa PO031

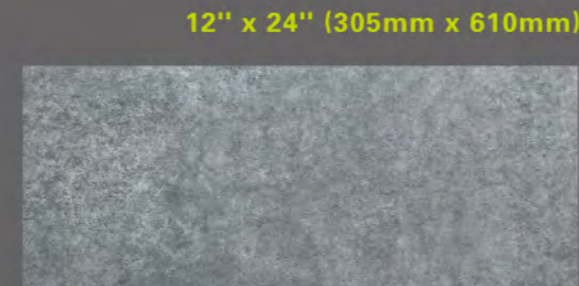
### 12" x 24" (305mm x 610mm)



Rock SC021



Rust SC041



Grigio PO021

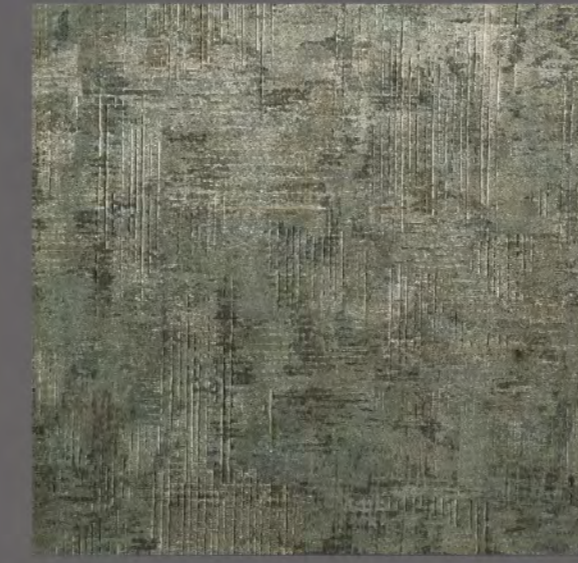


Nero PO041

### Brushed Concrete



Beige BC011



Bronze BC031



Blue BC021



Copper BC041



### Stratus Marble

### 12" x 36" (305mm x 915mm)



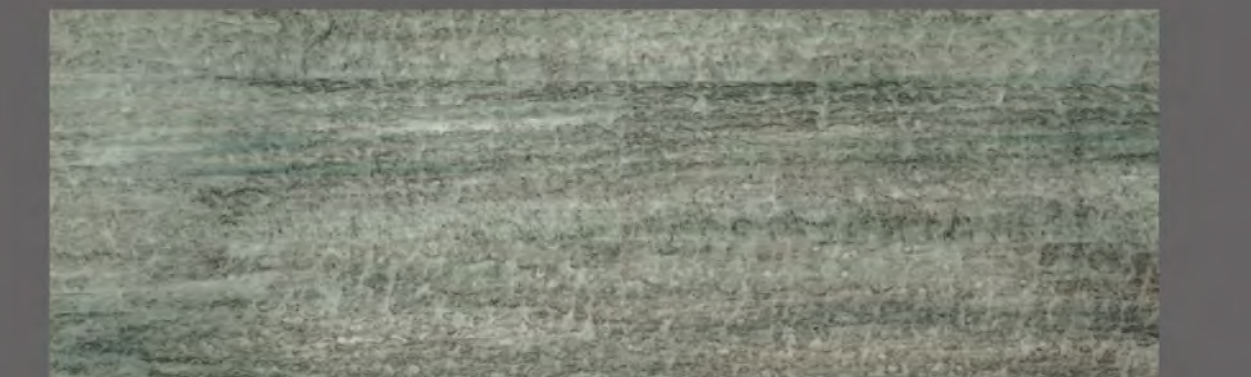
Earth SM011



Fire SM021



Wind SM031



Ice SM041