



| CHARACTERISTICS | TEST METHOD | URBAN |
|-------------------------|-----------------------|--------------------------|
| Luxury Vinyl Tile | EN 649 | Heterogeneous PVC |
| Lacquering PU | | Particle PU Lacquer |
| Weight | EN 430 | ca.4315 g/m ² |
| Thickness | EN 428 | 2.5 mm |
| Wear layer | EN 429 | 0.55 mm |
| Classification | EN 685 | 33, 42 |
| Fire Classification | EN 13501 | Bfl-S1 |
| Slip Resistance | DIN 51130 EN 13893 | R9 DS |
| Weargroup | EN 649 | T |
| Residual Indentation | EN 433 | <0.1 mm |
| Thermal Conductivity | DIN 52612 | 0.02 m ² k/w |
| Electrical Conductivity | EN 1081 | app 10 ¹¹ Ohm |
| Castor Chair | EN 425 | Yes, Type W |
| Floor Heating | | Yes, max.27° |
| Colourfastness | ISO 105-B02 | m>6 Grade |



URBAN

NOVALIS
INNOVATIVE FLOORING



Partner



www.novalis-intl.com

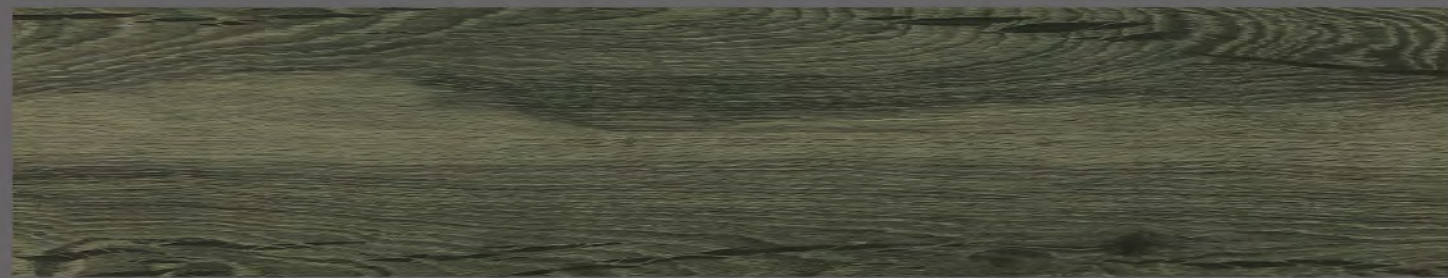
NOVALIS
INNOVATIVE FLOORING



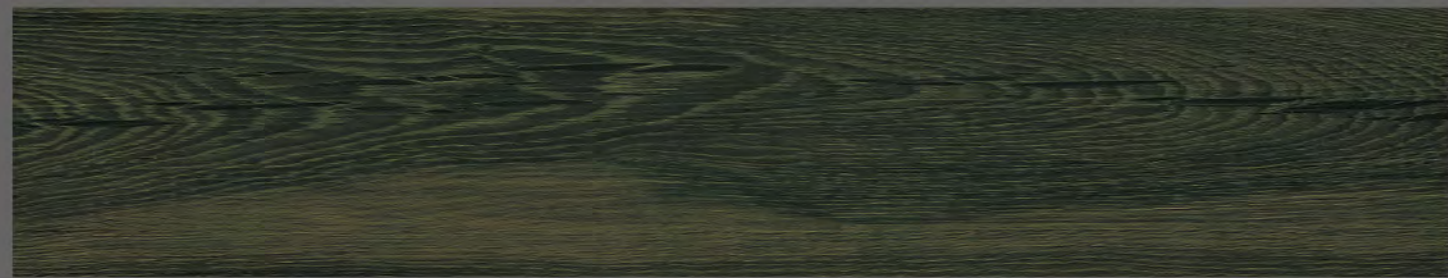
URBAN

Discharge the excessive decoration
In a utopia that is secluded from the city clamor
Let your mind wander freely

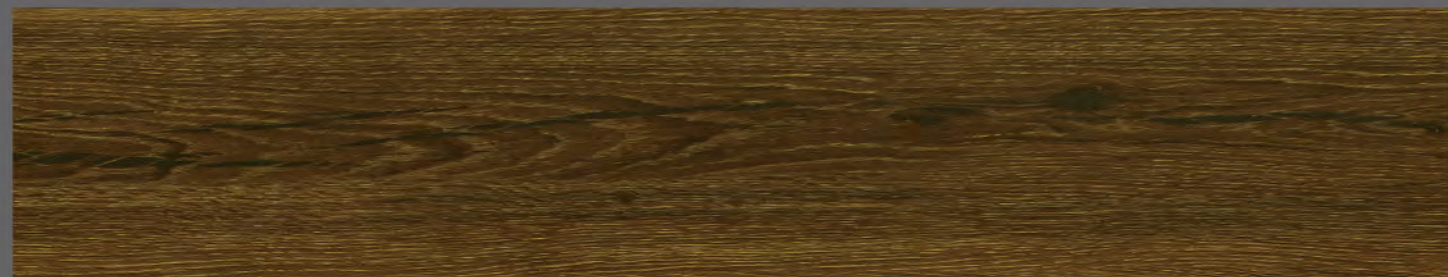
Urban 9" x 48" (229mm x 1220mm)



French Oak-Vodka UB101



French Oak-Whiskey UB102



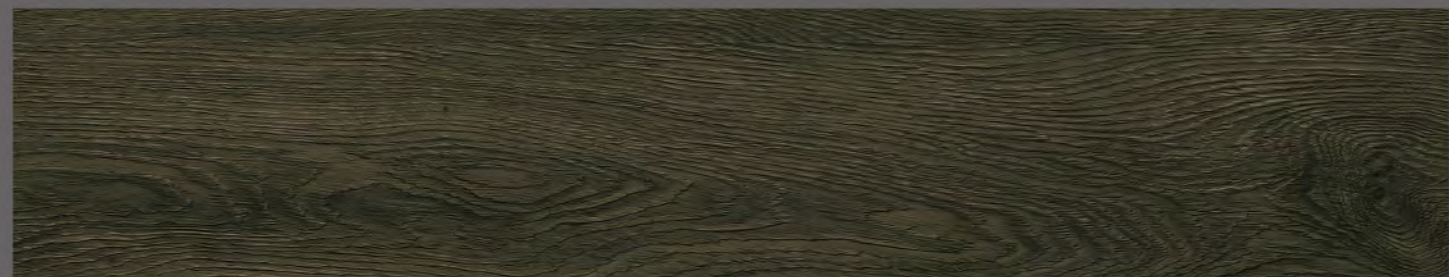
French Oak-Cognac UB103



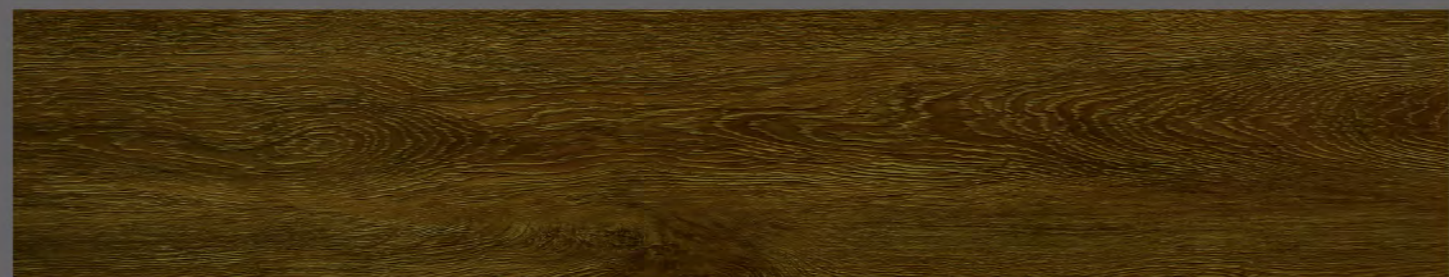
French Oak-Champagne UB104



Swiss Oak-Aurora UB105



Swiss Oak-Nocturne UB106



Swiss Oak-Dusk UB107



Swiss Oak-Dawn UB108

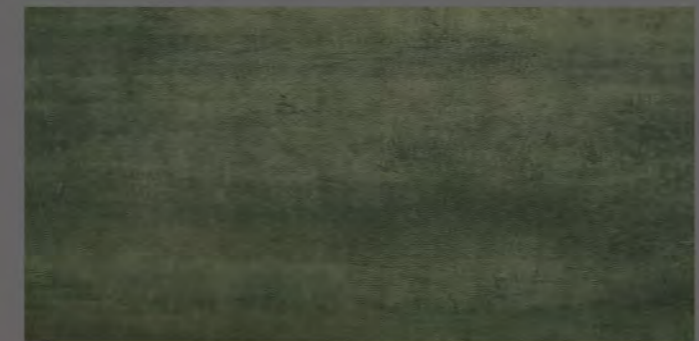
18" x 36" (458mm x 915mm)



Bluestone-Lime UB201



Bluestone-Sand UB202



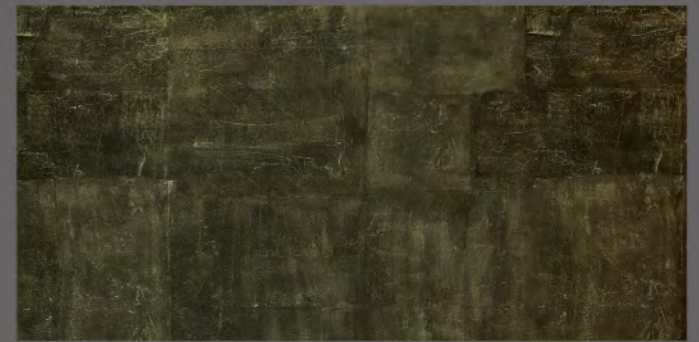
Bluestone-Ash UB203



Bluestone-Lava UB204



Shikumen-Nougat UB205



Shikumen-Chocolate UB206



Shikumen-Ivory UB207



Shikumen-Ebony UB208



The images are indicative only, please refer to the actual products.