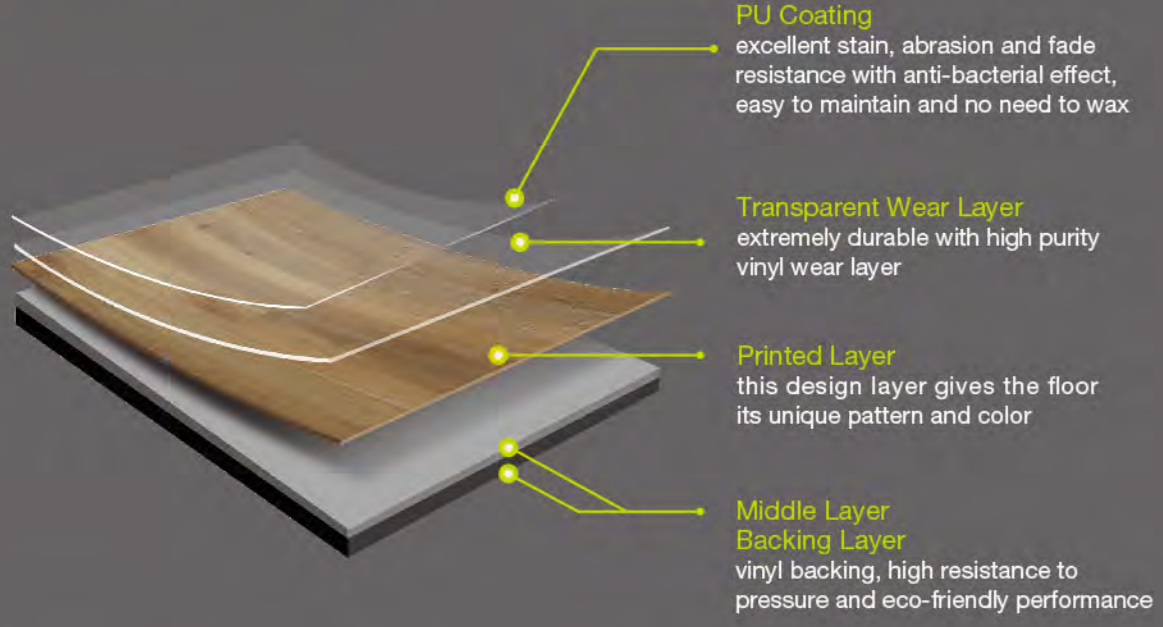


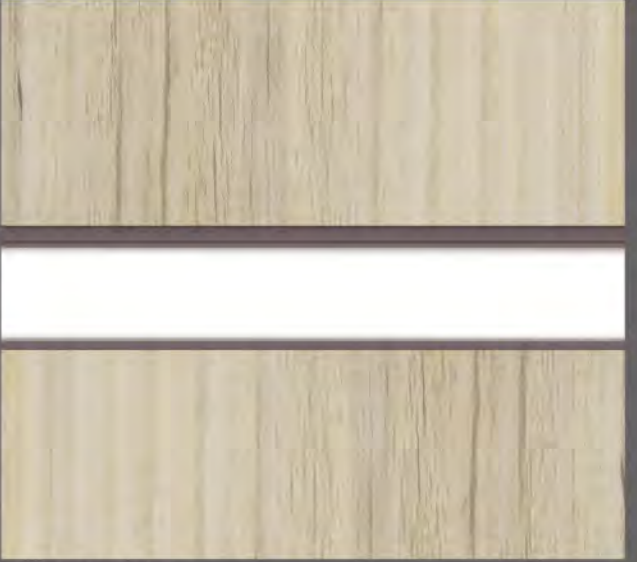
PRODUCT STRUCTURE



The thickness of NOVALIC wear layer is 0.3mm without microbevel (side view)



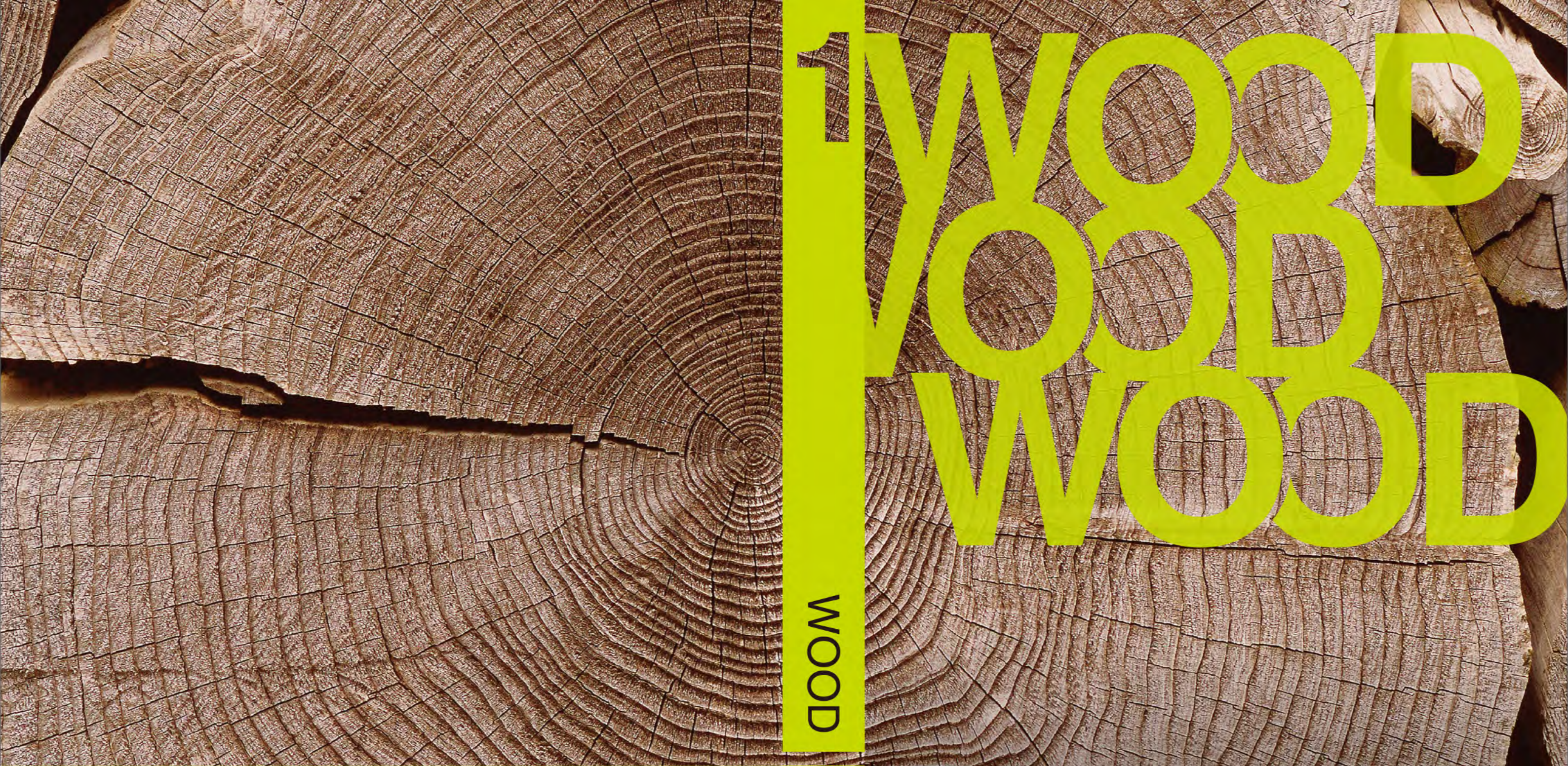
The thickness of NOVALIC wear layer is 0.55mm with microbevel (side view)



BEFORE installation



AFTER installation



**NOVALIS**  
INNOVATIVE FLOORING



[www.novalis-intl.com](http://www.novalis-intl.com)

**NOVALIS**  
INNOVATIVE FLOORING



CHARACTERISTICS	TEST METHOD	WOOD	NOVALIC
Luxury Vinyl Tile	EN 649	Heterogeneous PVC	Heterogeneous PVC
Lacquering PU		Particle PU Lacquer	Particle PU Lacquer
Weight	EN 430	ca.4315 g/m <sup>2</sup>	ca.8716 g/m <sup>2</sup>
Thickness	EN 428	2.5 mm	5.0 mm
Wear layer	EN 429	0.55 mm	0.55 mm
Classification	EN 685	23, 33, 42	23, 33, 42
Fire Classification	EN 13501	Bfl-S1	Bfl-S1
Slip Resistance	DIN 51130 EN 13893	R9 DS	R9 DS
Weargroup	EN 649	T	T
Residual Indentation	EN 433	<0.1 mm	<0.1 mm
Thermal Conductivity	DIN 52612	0.02 m <sup>2</sup> k/w	0.02 m <sup>2</sup> k/w
Electrical Conductivity	EN 1081	app 10 <sup>11</sup> Ohm	app 10 <sup>11</sup> Ohm
Castor Chair	EN 425	Yes, Type W	Yes, Type W
Floor Heating		Yes, max.27°	Yes, max.27°
Colourfastness	ISO 105-B02	m>6 Grade	m>6 Grade







## WOOD

Solid and profound color palettes

Inspired by the peaceful boreal forests

Together with delicate embossing from the sophisticated craftsmanship

Showing a strong sense of Scandinavian style

Simple, elegant with a true sense of coziness

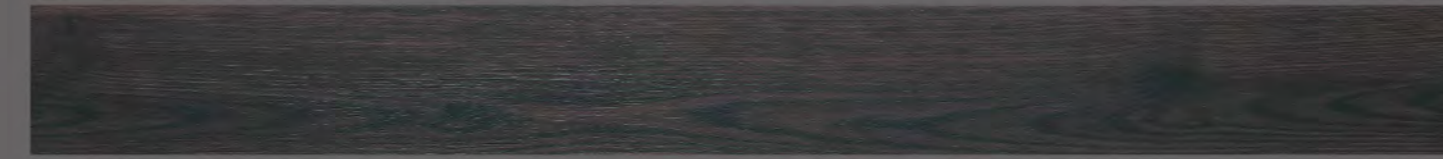
### Vintage Oak

5" x 48" (127mm x 1220mm)



Butternut

VO011

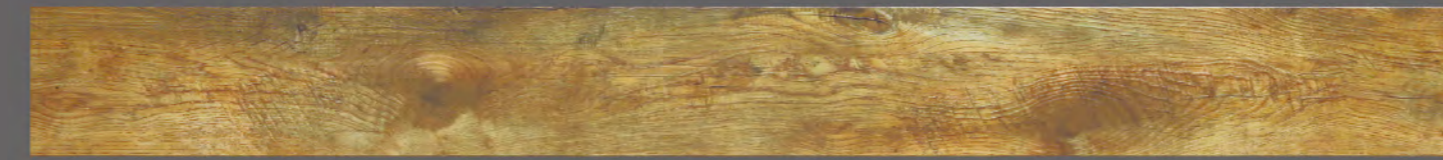


Chocolate

VO021

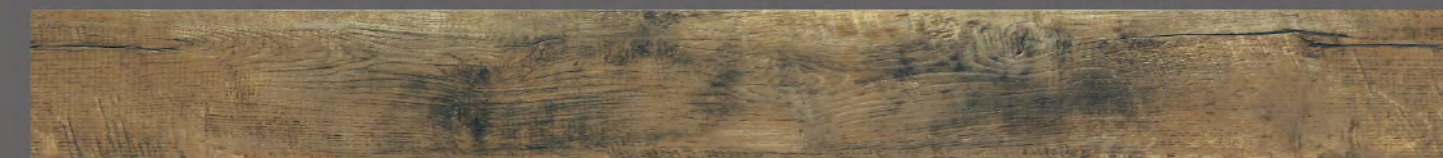
### Barnwood

5" x 48" (127mm x 1220mm)



Tumbleweed

BW011



Rawhide

BW021

### Essex Oak

5" x 48" (127mm x 1220mm)



Natural

EO011



Gunstock

EO021

### Driftwood

7" x 48" (178mm x 1220mm)



Bark

DW011



Ash

DW021

### Ontario Oak

7" x 48" (178mm x 1220mm)



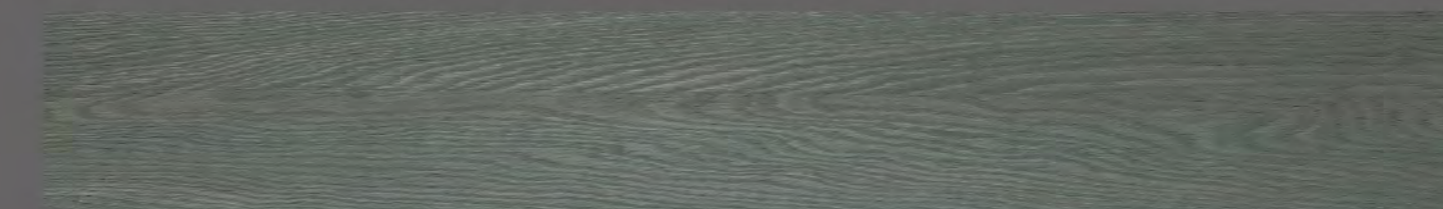
Dawn

OO011



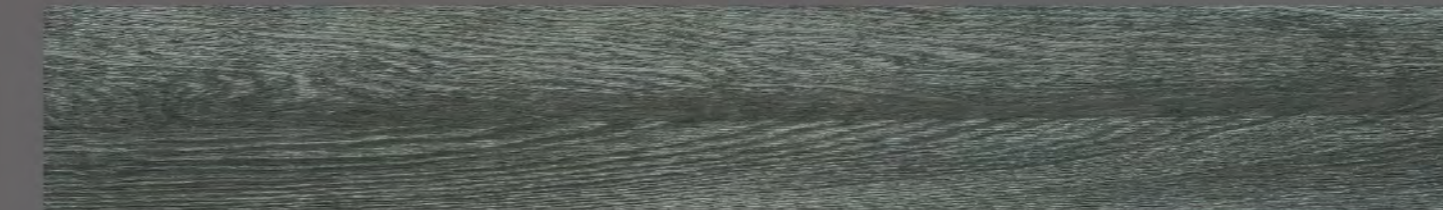
Fog

OO021



Smoke

OO031



Midnight

OO041



Latte

OO051



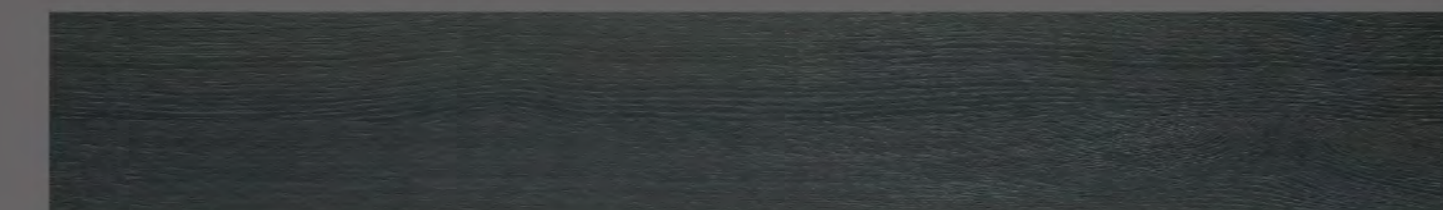
Cappuccino

OO061



Mocha

OO071



Espresso

OO081



The images are indicative only, please refer to the actual products.